

Railway Industry

SELECTION GUIDE

ANTALA
SPECIALTY CHEMICALS

HUNTSMAN Araldite
Empowering life through innovation Build. Bond. Protect.

DUPONT

DOWSIL
silicones

MOLYKOTE

KAJO

Tectyl

Merbenit

BOSTIK

Tecnite

The industry

At Antala we have more than 20 years of experience in the railway industry sector. We have a wide range of specific adhesive, sealing, lubrication, and protection products for each application, always complying with the strictest regulations (EN 45545-2 and DIN 6701).

We provide customized technical solutions to improve production processes, design innovation, compliance with safety regulations, respect for the environment and lower costs.

Solutions that reduce weight, lower costs, and respect the environment by complying with standard EN-45445-2.



EN-45545-2

The railway safety regulation EN-45545-2 standardises all the processes, tests, and requirements of the industry.

This standard classifies rail vehicles according to the level of fire risk associated with their design and operation. The three risk levels are: HL1, HL2 and HL3, with HL1 being the lowest requirement and HL3 being the highest.

MORE ABOUT EN-45545



Our Brands



Epoxies & Methacrylates

Araldite is the range of high-quality industrial adhesives from Huntsman Advanced Materials, a leading brand in performance, innovation and development that has a solid reputation in the industrial and commercial world.



Polyurethanes & Epoxies

DuPont is a multinational company dedicated fundamentally to different industrial branches of chemistry. His team makes up one of the largest chemical companies on the planet and works every day to find the most innovative solutions.



Silicone Adhesives & Sealants

Dow Corning, now known as DowSil, has established itself as the world leader in silicones since its founding in 1943. The brand offers the most advanced solutions to improve industrial performance and optimise processes.



MS Polymers

Merz + Benteli AG (Merbenit) is a benchmark in the manufacturing of adhesives and sealants. It was the first company in Europe to manufacture silane modified polymers (SMP), which adhere without adhesion promoters and are free of isocyanates and solvents.

MOLYKOTE

Pastes, Oils & Greases

Molykote is the trade name for Dupont specialty lubricants. With more than 70 years of experience, the brand stands out for its ability to face current lubrication challenges with proven solvency. Molykote is Smart Lubrication.



Smart Adhesives & MS Polymers

Bostik is a world leader in adhesives for the industrial sector and consumer products. Bostik is present in more than 45 countries and has been developing innovative solutions that impact our daily lives for more than a century.



Biodegradable Lubricants

KAJO is a manufacturer of special lubricants and greases with almost 50 years of experience in the market. Its products are designed for industries that need sustainable, technologically advanced, and high-performance lubricants.



Anti-corrosion Protection

Tectyl is Valvoline's anti-corrosion product brand in Europe, the Middle East and Africa. Through extensive market research, quality control and development, it offers the most suitable solution for all types of preservation processes.

Tecnite

Adhesives & Lubricants

Tecnite is a brand of specialty chemicals developed by DGE. As a supplier of high-quality products, it also provides customized solutions for the industry such as: thermal management, surface films and tapes, adhesives, and lubricants.



Rail Vehicle

Customised Solutions

Doors Engine Our range of products for the railway industry offers a selection of union, lubrication, and protection solutions for all railway segments, from high-speed, national, and regional trains, trams, metro, suburban and freight trains to their infrastructures.

In addition, we offer a personalised technical support service to help you find the best solution based on your needs.



1

HVAC Systems



2

Seats, tables & furniture



3

Kitchens & Toilets



4

Luggage Carriage



5

Sandwich Panels



6

Rail signage & lighting



7

Rail joints



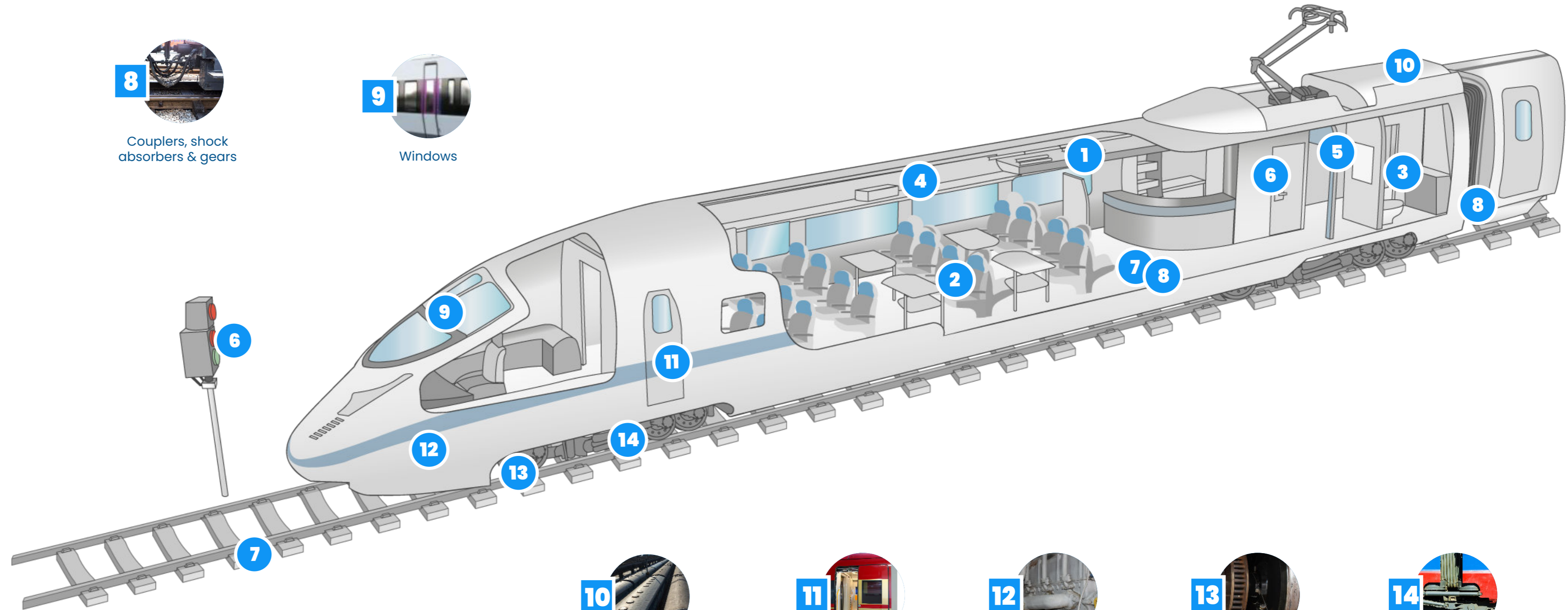
8

Couplers, shock absorbers & gears



9

Windows



10

Structure & roof reinforcement



11

Doors



12

Engine



13

Brakes



14

Bogie

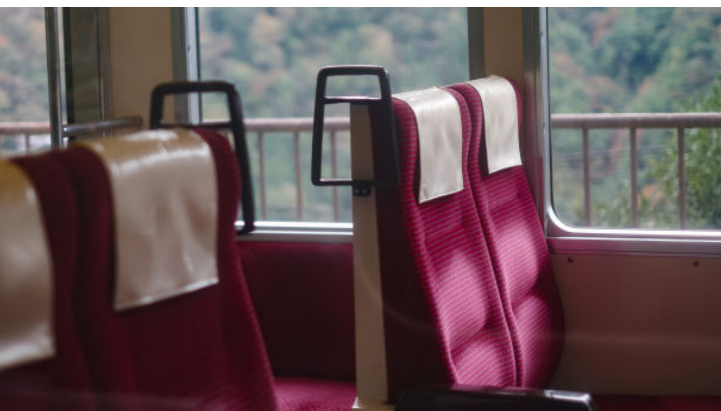


Interior Elements

Adhesives and sealants

Luggage carrier Our wide range of adhesives and sealants are suitable for a wide variety of substrates. Consequently, it allows to reduce weights and manufacturing costs.

This selection of products is ideal when it comes to absorbing vibrations, torsions, expansions, and contractions, thus effectively joining materials of different compositions, both rigid and flexible.



HVAC Systems



HUNTSMAN Araldite
Enriching lives through innovation. Build. Bond. Protect.

- | | |
|---|----------------------|
| ARALDITE® 420 | ARALDITE® 2019 |
| ARALDITE® 2013-1 | ARALDITE® AW/HW 4858 |
| • ARALDITE® 2015-1
EN-45545-2 | |

DOWSIL
dowelsil

- | | |
|----------------------|---------------------------------------|
| DOWSIL® 7091 | DOWSIL® 340 |
| DOWSIL® Firestop 700 | • DOWSIL® 3-6548
EN-45545-2 |

MOLYKOTE

- | | |
|---------------------|------------------|
| MOLYKOTE® 4 | MOLYKOTE® PG 54 |
| MOLYKOTE® PG 21 | MOLYKOTE® D |
| MOLYKOTE® PG-75 | MOLYKOTE® 111 |
| MOLYKOTE® 55 0-Ring | MOLYKOTE® G-2003 |

Merbenit

- MEREBENIT® RV55
EN-45545-2

Seats, tables & furniture



HUNTSMAN Araldite
Enriching lives through innovation. Build. Bond. Protect.

- | | |
|------------------|----------------------|
| ARALDITE® 2021-1 | ARALDITE® 2051 |
| ARALDITE® 2022-1 | ARALDITE® 2053-05/15 |

Tecnite

- TECNITE® MSP 15

Luggage Carriage



HUNTSMAN Araldite
Enriching lives through innovation. Build. Bond. Protect.

- | | |
|---|----------------------|
| ARALDITE® 2014-2 | ARALDITE® 2019 |
| • ARALDITE® 2015-1
EN-45545-2 | ARALDITE® AW/HW 4858 |
| • ARALDITE® 2053-05/15
EN-45545-2 | ARALDITE® 2021-1 |
| • ARALDITE® 2051
EN-45545-2 | ARALDITE® 2022-1 |

Kitchens & Toilets



MOLYKOTE

- MOLYKOTE® 111 COMPOUND (DSB)

HUNTSMAN Araldite
Enriching lives through innovation. Build. Bond. Protect.

- | | |
|------------------|------------------|
| ARALDITE® 2021-1 | ARALDITE® 2022-1 |
|------------------|------------------|

Sandwich Panels



HUNTSMAN Araldite
Enriching lives through innovation. Build. Bond. Protect.

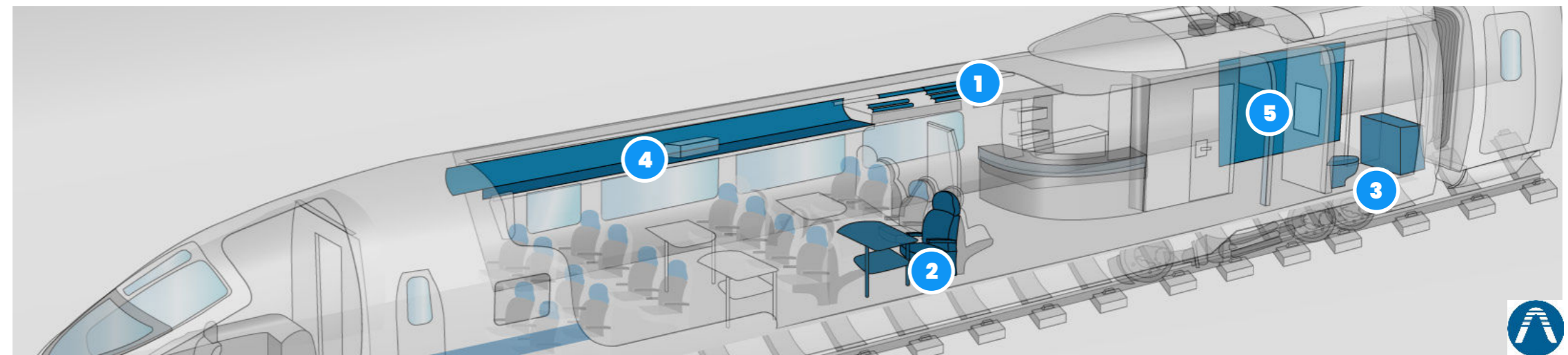
- | | |
|--------------------------------|---|
| ARALDITE® 420 | ARALDITE® 2021-1 |
| ARALDITE® 2013-1 | ARALDITE® 2022-1 |
| ARALDITE® 2051 | ARALDITE® AW 146 / HV 957 |
| ARALDITE® 2019 | ARALDITE® AW 9102 HP/ HW 9102 |
| XB 5090-1 / Arathane HY 5611-1 | • ARALDITE® 2015-1
EN-45545-2 |

MOLYKOTE

- MOLYKOTE® D

Tecnite

- TECNITE® MSP 15



Outer Elements

Lubricants and coatings

We have a range of lubricants and bio-lubricants –respectful of the environment– capable of extending the useful life in the most demanding points.

These products reduce maintenance and repair costs by avoiding relubrication.

We also have anti-rust protection solutions, extending the maximum durability of the coated materials.

Rail signage & lighting



HUNTSMAN Araldite
Enriching lives through innovation Build. Bond. Protect.

- | | |
|---|--|
| ARALDITE® 2013-1 | ARALDITE® 2028-1 |
| • ARALDITE® 2015-1
EN-45545-2 | ARALDITE® 2052-1 |
| ARALDITE® 2021-1 | • ARALDITE® 2051
EN-45545-2 |
| • ARALDITE® 2053-05
EN-45545-2 | • ARALDITE® 2053-15
EN-45545-2 |
| ARALDITE® CW 5620 / Arathane HY 5610 | |
| • ARALDITE® CW 1312 / Aradur HY 1300
EN-45545-2 | |
| • ARALDITE® CW 1302 / Aradur HY 1300
EN-45545-2 | |



Thixotropic adhesive with high filling capacity and tenacity, for a perfect union of the rail joint.

Rail joints



HUNTSMAN Araldite
Enriching lives through innovation Build. Bond. Protect.

- | | |
|---|--|
| ARALDITE® 2014-2 | ARALDITE® 2031-2 |
| ARALDITE® 2013-1 | ARALDITE® 2052-1 |
| • ARALDITE® 2015-1
EN-45545-2 | • ARALDITE® AW 2101 / HW 2951
EN-45545-2 |

HUNTSMAN Araldite
Enriching lives through innovation Build. Bond. Protect.

Araldite, is the range of high quality industrial adhesives from Huntsman Advanced Materials, a leading brand in performance, innovation and development that has a solid reputation in the industrial and commercial world.

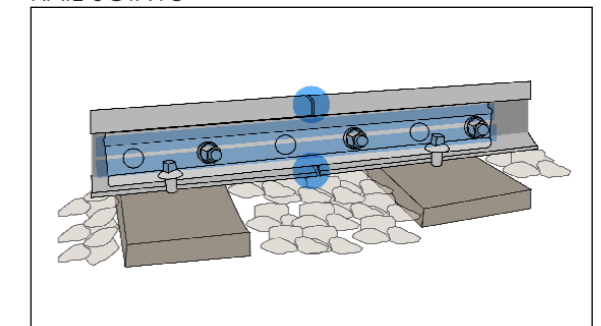
MOLYKOTE

- | | |
|------------------------|-------------------------------|
| MOLYKOTE® EM 50L | MOLYKOTE® 3400
A Lead Free |
| MOLYKOTE® Cu-7439 Plus | |

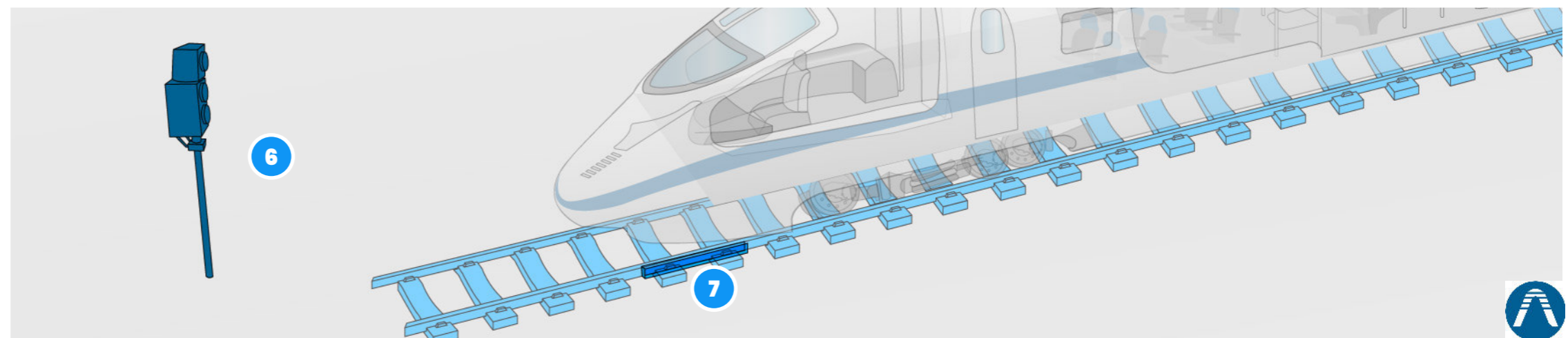
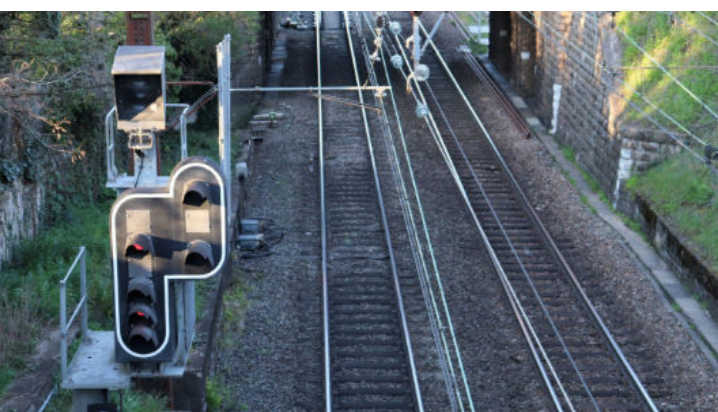
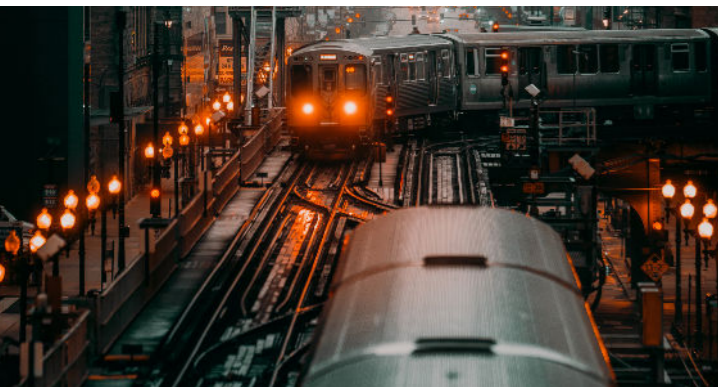
Merbenit

- | |
|---------------------------------------|
| • MEREENIT® RV55
EN-45545-2 |
|---------------------------------------|

RAIL JOINTS



➤ ARALDITE 2015-1



Structural Elements

Main Applications

Structural adhesives are applied to structural parts such as ceilings, doors, floors, and semi-structural products such as floor coverings, door frames and hinges. These must be easy to apply and have a high resistance to stress and impact.

Likewise, we have a wide range of products for gluing and sealing railway windows, complying with the EN-45545-2 standard.

Couplers, shock absorbers & gears



MOLYKOTE

MOLYKOTE® EM 50L	MOLYKOTE® 3400 AFC
MOLYKOTE® Cu-7439	MOLYKOTE® 1000
MOLYKOTE® 55 O-Ring	MOLYKOTE® FS3452
MOLYKOTE® PG 54	MOLYKOTE® 7409 AFC
MOLYKOTE® P-40	MOLYKOTE® Polygliss-N
MOLYKOTE® Multitub	MOLYKOTE® 3402 AFC
MOLYKOTE® U-N	MOLYKOTE® D321-R
MOLYKOTE® PG 21	MOLYKOTE® BG 20
MOLYKOTE® 3402 AFC	MOLYKOTE® FS3452
MOLYKOTE® D-321R SPRAY	MOLYKOTE® HSC PLUS
MOLYKOTE® 3402-C LEAD FREE	MOLYKOTE® LONGTERM 00 Fluid grase
MOLYKOTE® LONGTERM 2 PLUS GREASE	

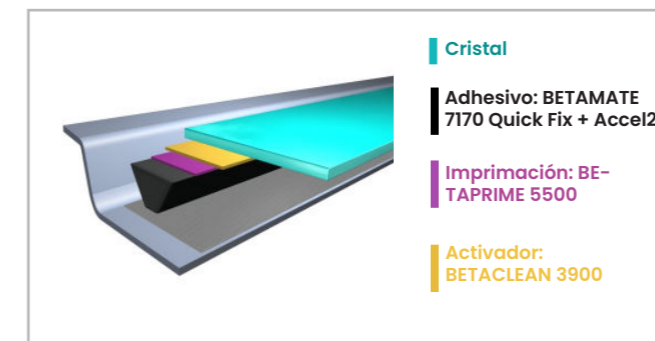
Tectyl

TECTYL® 5660W FR	TECTYL® MULTIPURPOSE
TECTYL® 210 R	



BETAMATE 7170 QUICK FIX+ ACCEL2, HIGH QUALITY WINDOW SEALANT

DUPONT



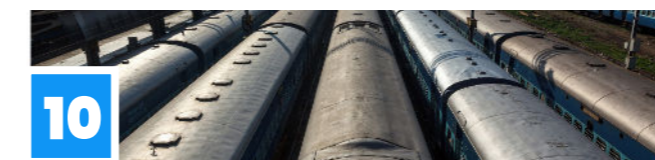
Windows



DUPONT

• BETASEAL® 1590 CT EN-45545-2	• BETAMATE® 7120 EN-45545-2
• BETASEAL® 7170 CT Quick Fix+ Accel2 EN-45545-2	• BETAMATE® 2700 EN-45545-2
• BETAPRIME® 5500	• BETACLEAN® 3900

Structure & roof reinforcement



HUNTSMAN Araldite

ARALDITE® 2014-2	ARALDITE® AV 170
ARALDITE® AW 4858	ARALDITE® AV 4600
ARALDITE® 2011	ARALDITE® 2019
ARALDITE® 2013-1	ARALDITE® 2022-1
• ARALDITE® 2015-1 EN-45545-2	ARALDITE® 2048-1
	• ARALDITE® 2023-60 EN-45545-2

Doors

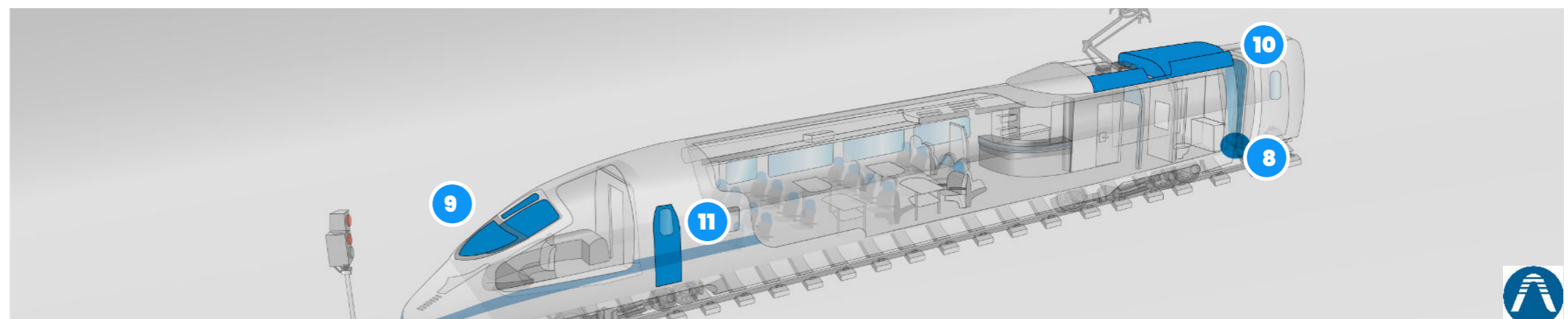


HUNTSMAN Araldite

ARALDITE® 420	ARALDITE® 2013-1
ARALDITE® 2019	ARALDITE® AW / HW 4858
• ARALDITE® 2015-1 EN-45545-2	• ARALDITE® 2023-60 EN-45545-2

MOLYKOTE

MOLYKOTE® 1000	MOLYKOTE® 3400
----------------	----------------

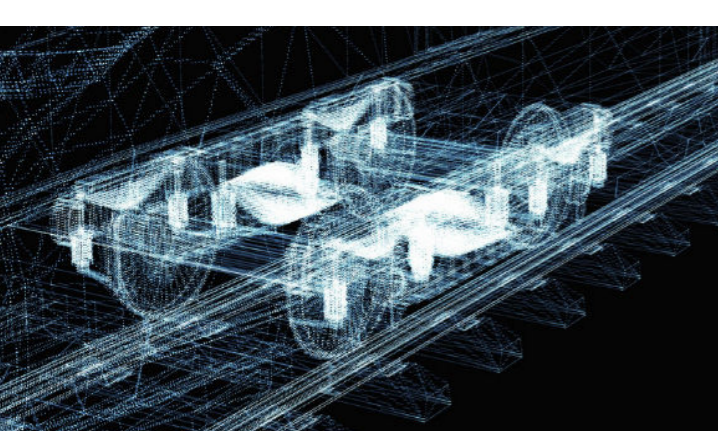


Traction System

Lubricación de altas prestaciones

The traction system within a train is one of the most demanding sections due to its complexity and the conditions to which it is subjected.

Points such as the engine, the boogie, the braking system, or the hitches require high-performance lubrication. Molykote products are designed to exceed the highest demands in points such as bearings, axles, wheels, shock absorbers, etc.



Engine



MOLYKOTE

MOLYKOTE® Z powder MOLYKOTE® 4 compound
MOLYKOTE® G

Tectyl

TECTYL® Underbody coating bronze

Brakes



MOLYKOTE

MOLYKOTE® 1000	MOLYKOTE® Longterm 2 Plus
MOLYKOTE® Gn-Plus	MOLYKOTE® Longterm 00
MOLYKOTE® G-Rapid Plus	MOLYKOTE® PG-54
MOLYKOTE® Multigliss	MOLYKOTE® P40
MOLYKOTE® Powder Spray	MOLYKOTE® G 4700
MOLYKOTE® 44M	MOLYKOTE® 3400 a lead free
MOLYKOTE® 55 O ring grease	MOLYKOTE® CU-7439 PASTE

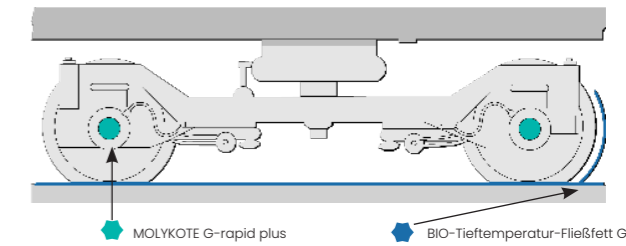
HUNTSMAN Araldite

ARALDITE® 64-1 ARALDITE® 71



MOLYKOTE G-n plus, high performance for wheel trimming.

Bogies



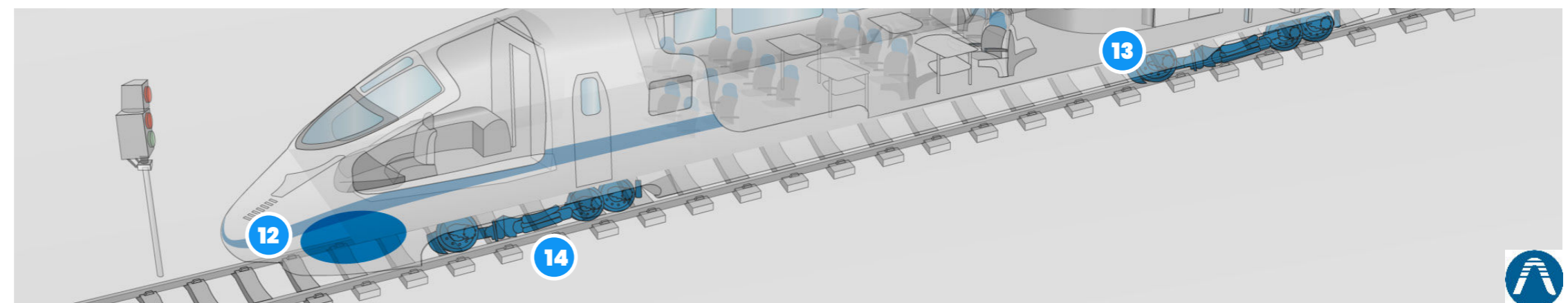
MOLYKOTE

MOLYKOTE® G-n plus	MOLYKOTE® G-rapid plus	MOLYKOTE® 3400 anti-friction coating	MOLYKOTE® D-321 R anti-friction coating
MOLYKOTE® Longterm 00 grease	MOLYKOTE® 55 O-Ring grease	MOLYKOTE® PG 54 grease	MOLYKOTE® G-rapid paste
MOLYKOTE® Lubolid 7365 additive powder	MOLYKOTE® D78 additive	MOLYKOTE® BG-20 grease	MOLYKOTE® BR2 Plus grease
MOLYKOTE® III Compound	MOLYKOTE® 44 M grease	MOLYKOTE® Longterm 2 Plus	MOLYKOTE® Multigliss
MOLYKOTE® DX Paste	MOLYKOTE® Powder spray	MOLYKOTE® TP-42	MOLYKOTE® P40
MOLYKOTE® 3402C			

KAJO

BIO-Baja temperatura G

Our range of biodegradable lubricants reduce wheel-track wear and noise.





ANTALA
SPECIALTY CHEMICALS



www.antala.uk

