



Take me on a road trip!

SMART ADHESIVES FOR RECREATIONAL VEHICLES



Bostik, a leading adhesive specialist

As one of the largest adhesive and sealant companies, Bostik's business involves more than just sticking things together. Our adhesives are used in a wide range of industries, from industrial manufacturing, assembly and transportation, to everyday mobility improvement applications.



Bostik has patented over 9,000 technologies for various applications. Today, we operate in the industrial, construction and consumer sectors in more than 50 countries.

Bostik in Transportation

RV, bus, rail and automotive manufacturers require adhesive technologies that can cope with the unique conditions of each region, such as extreme temperatures or UV exposure.

For camping caravans, motorhomes and trailers, Bostik has developed an intelligible shortlisted range of technologies covering multiple manufacturing applications and constraints.

Bostik provides a wide range of technologies adapted to multiple interior and exterior applications, bearing in mind the needs of manufacturers for safer, lighter, and more sustainable solutions.

6% ANNUAL GROWTH
IN RV SECTOR

100% OF SMP
CAN BE USED IN
RV APPLICATIONS

95% OF RV APPLICATIONS
CAN BE SOLVED
WITH BOSTIK
TECHNOLOGIES



Bostik is aligned with RV manufacturers priorities



Safety

Remain committed to create products that comply with stringent safety standards, ensuring the health and well-being of the individuals who manufacture and benefit from the products.



Lightweight

RV manufacturers are redesigning their products and seek any opportunity for lighter materials integration, without compromise on their performance and added value.



Sustainability

RV manufacturers must face increasingly stringent environmental regulations, needing reliable suppliers to develop responsible production processes and study their product's life cycle.

Exterior

MAIN APPLICATIONS

Bostik offers solutions for a wide range of exterior applications, including:

- Sandwich Panel Bonding
- Roof Bonding
- Chassis Sealing
- Body Assembly & Exterior Sealing

Bostik's smart adhesive solutions are based on different products:

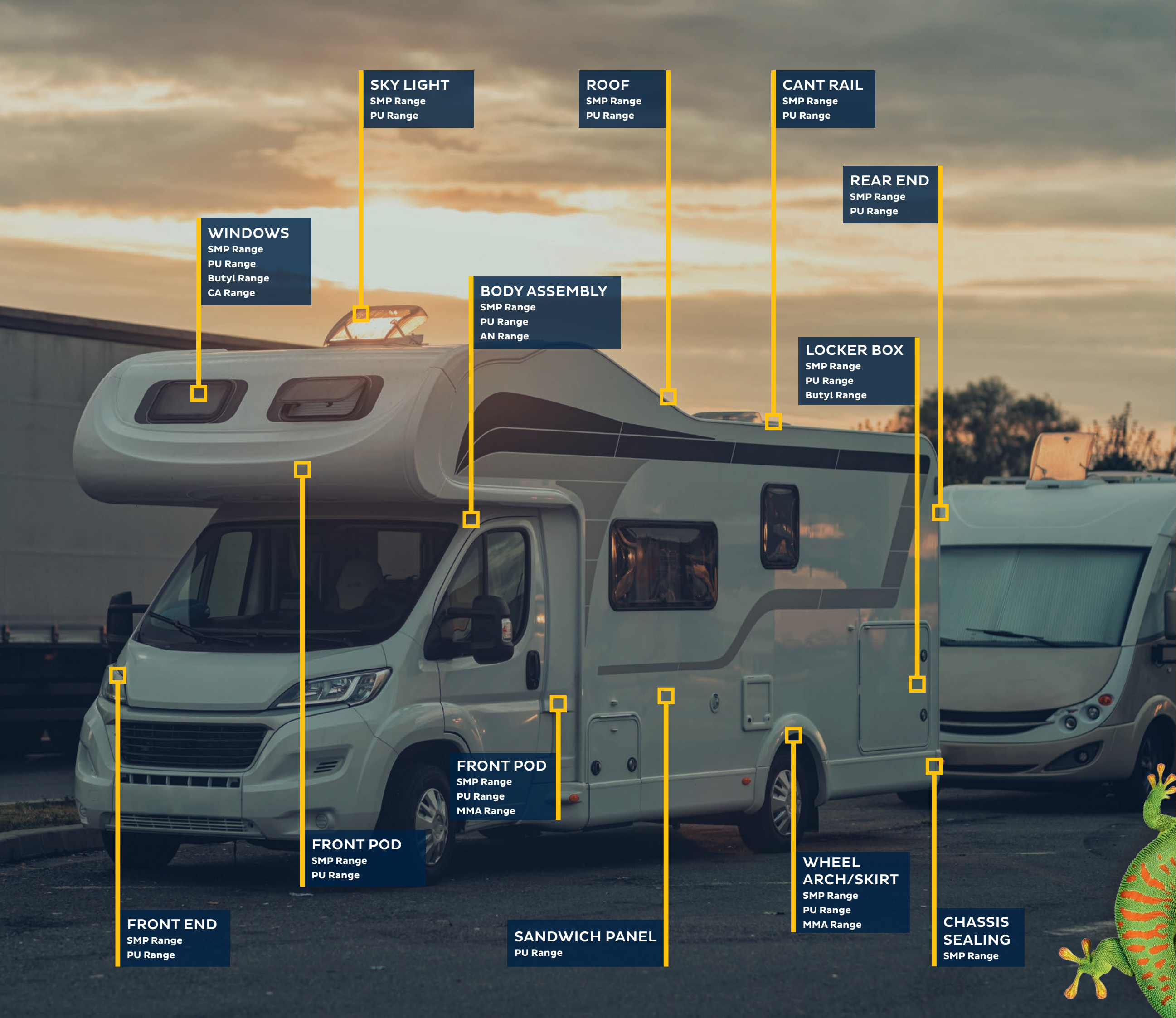
- Sealants
- Structural adhesives
- Anaerobic adhesives

With Bostik, RV manufacturers have high-performance solutions with key characteristics such as:

- Ease of use
- Low VOC
- Low odour, low bloom
- High structural strength
- Waterproof/ Airtight
- Lightweight
- Noise reduction

+ other

- Butyl Range
- Cyanoacrylate Range
- Service Products



Interior

MAIN APPLICATIONS

Bostik offers solutions for a wide range of interior applications, including:

- Flooring
- Wet Areas Sealing
- Interior Bonding & Sealing

Bostik's smart adhesive solutions are based on different products:

- Sealants
- Structurals
- Liquid systems
- Hotmelt adhesives
- Cyanoacrylate adhesives
- Anaerobic adhesives

With Bostik, RV manufacturers have high-performance solutions with key characteristics such as:

- Ease of use
- Low VOC
- Low odour, low bloom
- Less pre-treatment
- Waterproof/ Airtight
- Lightweight
- Noise reduction

SEALING (WINDOW)

SMP Range
PU Range
CA Range

INTERIOR FINISHING

SMP Range
PU Range
CA Range

SEAT

SMP Range
Butyl Range
Water-Based Range
Solvent-Based Range
Hotmelt Range
MMA range

FURNITURE

SMP Range
PU Range
Silicone Range
Hotmelt Range

SEALING (WET AREAS)

Silicone Range

SEALING (INTERIOR)

SMP Range
PU Range

FLOOR COVERING

SMP Range
Water-Based Acrylic Range
Solvent-Based Range
HMPSA Range

WOOD LAMINATION

PU Range
Solvent-Based Range

BUILT-IN FURNITURE / APPLIANCES

SMP Range
CA Range
AN Range

Interior



	SEALANTS			STRUCTURAL	LIQUID		HOTMELT	ENGINEERING ADHESIVES	
	SMP*	PU	SILICONE	MMA/PU	WATER BASED	SOLVENT BASED	HMPSA	CA	AN
Floor covering	(+)				•	•	(+)		
Furniture bonding and sealing	•	(+)	(+)					(+)	
Interior finishing and sealing	•	(+)	(+)					•	
Seats	•			(+)	(+)	(+)	(+)	(+)	(+)
Wet area sealing			•						
Window sealing	•	(+)						(+)	
Wood lamination		•			(+)	(+)			
Water / gas pipe sealing									•
HVAC pipe sealing									•
Threadlocking									•
Repair	•	(+)	(+)	(+)	(+)	(+)		•	(+)

• Recommended (+) Optional
* SMP can be used with DUAL technology to accelerate process time

Sealant / adhesive systems are designed to meet all bonding and sealing requirements, while significantly optimising production time. Bostik has been the market leader in **SMP** technology in the transportation market for over 25 years. Formulated with both adhesive and sealant capabilities, SMP is ideal for composite bonding, sidewall and floor panel bonding, and window bonding. Designed to offer good adhesion and varied open times, it allows operational efficiencies by reducing production complexity, time and costs. Unlike certain adhesive technologies, SMP also improves aesthetic appeal and is a safer choice for workers.

Structural adhesives are load-bearing, they add strength to the exterior parts for durability and reliability. Bostik's **MMA** products provide a unique balance of high strength, impact and fatigue resistance, flexibility, elongation, shear and peel strength, and are usable within a wide temperature range. They cure at ambient temperature with controlled cure speed and require little or no surface preparation. They are not moisture sensitive, and are water and chemical resistant.

Exterior



	SEALANTS		STRUCTURAL	LIQUID	ENGINEERING ADHESIVES		
	SMP*	PU	MMA/PU	WATER /SOLVENT BASED	CA	AN	BUTYL
Chassis & floor sealing	•	(+)					(+)
Underbody coating	•			•			
Sandwich panel			•				
Front and rear end walls	•	(+)					(+)
Roof	•	(+)					
Body assembly	•	(+)			(+)	(+)	(+)
Door	•	(+)					
External fittings	•	(+)	•				(+)
Front pods	•	(+)					
Trims	•	(+)					•
Locker box	•	(+)		•			
Windows	•	(+)			(+)	(+)	(+)
Pipe sealing and threadlocking						•	
Repair			•			•	

• Recommended (+) Optional
* SMP can be used with DUAL technology to accelerate process time

Using **Hotmelt adhesives** for a range of applications offers the following advantages: optimal holding power, superior flexibility for better performance under constant stress, and quick adhesion. HMPSA/PO for interior applications provide instant bonds as they solidify by cooling, and remain permanently tacky.

Bostik's **Butyls** for exterior applications are non-hardening mastic sealants designed to form a weatherproof and dust-proof seal, which stays permanently flexible. **Liquid adhesives** offer excellent adhesion to low surface

energy substrates. Solvent based adhesives are designed for pressure bonding application with a quick drying time, quick processing, excellent creep resistance, and green strength. Water-based adhesives are environmentally friendly and highly versatile materials. They offer high tack, and good water and heat resistance.

Bostik's Born2Bond™ Engineering Adhesives range includes Instant Adhesives, Light Cure Adhesives, Anaerobic Adhesives, Cleaners & Lubricants for reliable assembly, maintenance and repair applications.

European product sheet

CHASSIS AND FLOOR						
Application	Recommended Products	Advantages	Other Products	Advantages	Other Products	Advantages
Chassis sealing	ISR 70-01 AP (SMP)	Free of solvent, isocyanate and PVC. Sound and vibration reducing. High weathering resistance. Primerless	STR 60-01 (SMP)	Free of solvent, isocyanate and silicone. No shrinkage and bubble free. Weathering resistance. Primerless	PSR 40-01 / 50-01 (PU)	Low monomer. High elasticity. No sagging and bubble free.
Floor fixing	ISR 70-03 / 70-05 AP (SMP)	Free of solvent, isocyanate and PVC. High initial strength and high tack. Good ageing properties. Primerless	STR 60-03 (SMP)	Free of solvent, isocyanate and PVC. No sagging. Fast extrusion rate. Good ageing properties. Primerless	PSR 50-02 (PU)	High curing speed. No sagging and no stringing. Labelled.
Underbody coating	Bostik 6065 (WB)	High elasticity. Neutral and odourless. Quick drying and good abrasion resistance. Curing indicator.	MSR BC / ISR 70-07 (SMP)	Free of solvent and isocyanate. Good ageing properties. Sound and vibration deadening. Sprayable. Primerless		
Fluid pipe sealing	Born2Bond™ PA-77 (AN)	Strong gap filling (M80). Shock resistant. Fast sealing.	Born2Bond™ PA-42 (AN)	Fast curing for small diameters (M36).		
Air pipe sealing	Born2Bond™ PA-42 (AN)	Fast curing for small diameters (M36)	Born2Bond™ PA-77 (AN)	Strong gap filling (M80). Shock resistant. Fast sealing.		
Threadlocking	Born2Bond™ TA-43 (AN)	Medium strength threadlocker. Fast curing. Oil tolerant.	Born2Bond™ TA-70 (AN)	High strength threadlocker. Fast curing. Chemical resistance.	Born-2Bond™ TA-22 (AN)	Low strength threadlocker. Fast curing. Strong chemical resistance.

WALLS AND SANDWICH PANEL BONDING						
Application	Recommended Products	Advantages	Other Products	Advantages	Other Products	Advantages
Sandwich panel	XPU 18375M (1KPJ)	Fast and easy application. Solvent free and odourless. Good weathering and water resistance.	Marocol 18576 + H4300B (2KPJ)	Fast and easy application. Solvent free. Long open time. Good adhesion to metal.	Marocol PU2D430 + 61129 + H4300B (3KPJ)	Solvent free. Modular system enabling variation in open time & pressing time to suit application and ambient conditions.
Front and rear End	ISR 70-03 / 70-05 AP (SMP)	Free of solvent, isocyanate and PVC. High initial strength and high tack.	STR 60-03 (SMP)	Free of solvent, isocyanate and PVC. No sagging. Fast extrusion rate. UV and ageing properties. Primerless.	PSR 50-02 / 50-08 (PU)	Easy application. Cost effective.
Roof	ISR 70-03 / 70-05 AP (SMP)	Good UV resistance and ageing properties. Primerless				

EXTERIOR BONDING AND SEALING						
Application	Recommended Products	Advantages	Other Products	Advantages	Other Products	Advantages
Body assembly	ISR 70-03 / 70-05 AP (SMP)	Free of solvent, isocyanate and PVC. High initial strength. High tack. High grab. Good UV resistance. Good ageing properties. Primerless.	STR 60-03 (SMP)	Free of solvent, isocyanate and PVC. No sagging. Fast extrusion rate. UV resistance. Ageing properties. Primerless.	PSR 50-02 / 50-08 (PU)	Easy application. Cost effective.
Doors	ISR 70-03 / 70-05 AP (SMP)		STR 60-03 (SMP)		PSR 50-02 / 50-08 (PU)	
Front pods	ISR 70-03 / 70-05 AP (SMP)		STR 60-03 (SMP)		PSR 50-02 / 50-08 (PU)	
External fittings	ISR 70-03 / 70-05 AP (SMP)	Excellent UV resistance. Primerless.	STR 60-03 (SMP)	High sealing performance. Good adhesion to clean or oily metal.	FIT / SAF 30 (MMA)	Fast fixture and no sagging. High strength and modulus. High chemical resistance.
Trims	ISR 70-03 / 70-05 AP (SMP)		STR 60-03 (SMP)		Liquid butyl Extruded butyl	Permanent plastic and tacky. Good adhesion to almost all substrates. Good ageing properties. Good weathering resistance.
Locker box	ISR 70-03 / STR 60-02 (SMP)	Fast and controlled curing. High elongation. Good UV resistance. Good ageing properties. Good gunnability. Primerless.	Butyl 1590 (SB)	High green strength. Good UV resistance. Good ageing properties. Primerless.	Liquid butyl Extruded butyl	Easy application. Cost effective.
Panoramic windows	ISR 70-03 (SMP)		ISR 70-08 AP (SMP)		PSR 50-02 / 50-08 (PU)	
Side windows	ISR 70-03 (SMP)		ISR 70-08 AP (SMP)		PSR 50-02 / 50-08 (PU)	

INTERIOR BONDING AND SEALING						
Application	Recommended Products	Advantages	Other Products	Advantages	Other Products	Advantages
Floor covering	Bostik Green Contact / Bostik Attack / Bostik Contact 31 (WB)	Low VOC. Solvent free contact adhesive. Can be reactivated by heat. Long open time.	Cofix S (SB)	Excellent initial bond strength. Excellent spraying properties.	TLH 2211 (HMPSA)	For fabric backed PVC. Spray application. Instant bonding. High shear resistance.
Furniture bonding & sealing	ISR 70-01 AP (SMP)	Free of solvent, isocyanate and PVC. High initial strength and high tack.	STR 60-01 (SMP)	Free of solvent, isocyanate and silicone. No shrinkage and bubble free. Weathering resistance. Primerless.	PSR 50-02 (PU)	High curing speed. No sagging and no stringing. Labelled.
Interior sealing & finishing	ISR 70-01 AP (SMP)	Good UV resistance and ageing properties. Primerless.	STR 60-01 (SMP)	Free of solvent, isocyanate and silicone. No shrinkage and bubble free. Weathering resistance. Primerless.	PSR 50-02 (PU)	
Sealing (wet areas)	Bondflex 400 (neutral) Silicone N (neutral)	Odourless. Waterproof sealing. Low shrinkage. anti-fungal and non corrosive.	Bondflex 100 (acetox)	Waterproof sealing. Low shrinkage. Anti-fungal and non corrosive.		
Water / gas pipe sealing	Born2Bond™ PA-77 (AN)	Strong gap filling (M80). Shock resistant. Fast sealing.	Born2Bond™ PA-42 (AN)	Fast curing for small diameters (M36).		
HVAC pipe sealing	Born2Bond™ PA-42 (AN)	Fast curing for small diameters (M36).	Born2Bond™ PA-77 (AN)	Strong gap filling (M80). Shock resistant. Fast sealing.		
Structural & general bonding	Born2Bond™ Structural (CA)	Fast curing structural adhesive. Long open time if needed. Long mixer life time.	Born2Bond™ Flex (CA)	Fast curing flexible 2K CA. General fixation. Fast bonding.	Born2Bond™ Ultra MV (CA)	Medium viscosity Instant adhesive. Low odour and low blooming. Low labelling.

PRIMERS AND CLEANERS	
Products	Application
Cleaner I	An ideal cleaner for cleaning and degreasing of substrates
Prep CS	A one-step pre-treatment to improve adhesion to closed substrates
Prep G	A black pre-treatment on glass that is not protected from UV
Prep G+	A black pre-treatment on glass
Born2Bond™ Pre-Bonding Cleaner	Cleaning of all kinds of substrates. Removes grease, oil, lubricants and other contaminants without leaving any residue

REPAIR		
Products	Technology	Application
XPU20102	2KPU	Aftermarket plastic repair for interior and exterior (bumpers, headlight brackets etc.)
Born2Bond™ Ultra MV	Cyanoacrylate	Aftermarket repairs (instant bonding of plastic, rubber, wood and metal parts of interior).
Born2Bond™ Flex	Cyanoacrylate	Applications for vibration and impact resistance, flexible and elastic bonding.
Born2Bond™ Repair	Cyanoacrylate	Fast repair and rebuilding adhesive. Grindable, paintable, and drillable within minutes. Gap filling.
SAF 101	MMA	Fast curing, high strength and sandable.

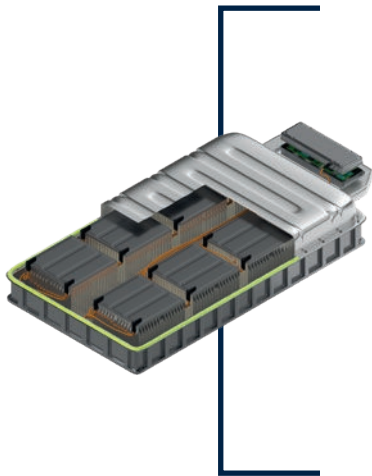
Bostik is prepared for the future



Driven by climate concerns, e-mobility and the electrification of powertrains are at the core of this transition towards a sustainable future with battery as key technology.

Arkema group and Bostik are at the forefront of the technological and industrial transformation with its unique position all along the battery value chain, inside and outside of the battery cell. We help you to address the challenges of today's and tomorrow's batteries such as fast longer service life, improved safety, faster charging, reliable performance, cost and greater range.

Bostik is committed to enhance battery performance with increased **efficiency, safety and reliability with our smart adhesives and sealants portfolio** for battery systems: from cell to module and battery pack assembly, thermal management, encapsulation of electronic components up to its vehicle integration onto the chassis.



Cell to Module Assembly

- Cylindrical cell to cell and cell to module bonding
- Pouch cell to cell bonding
- Prismatic cell to cell bonding

Battery Pack Assembly

- Sealing
- Gasketing
- Lamination for EMI Shielding
- Structural bonding

Thermal Management

- Thermally Conductive Gap filler and Adhesive

Encapsulation of Electronic Components

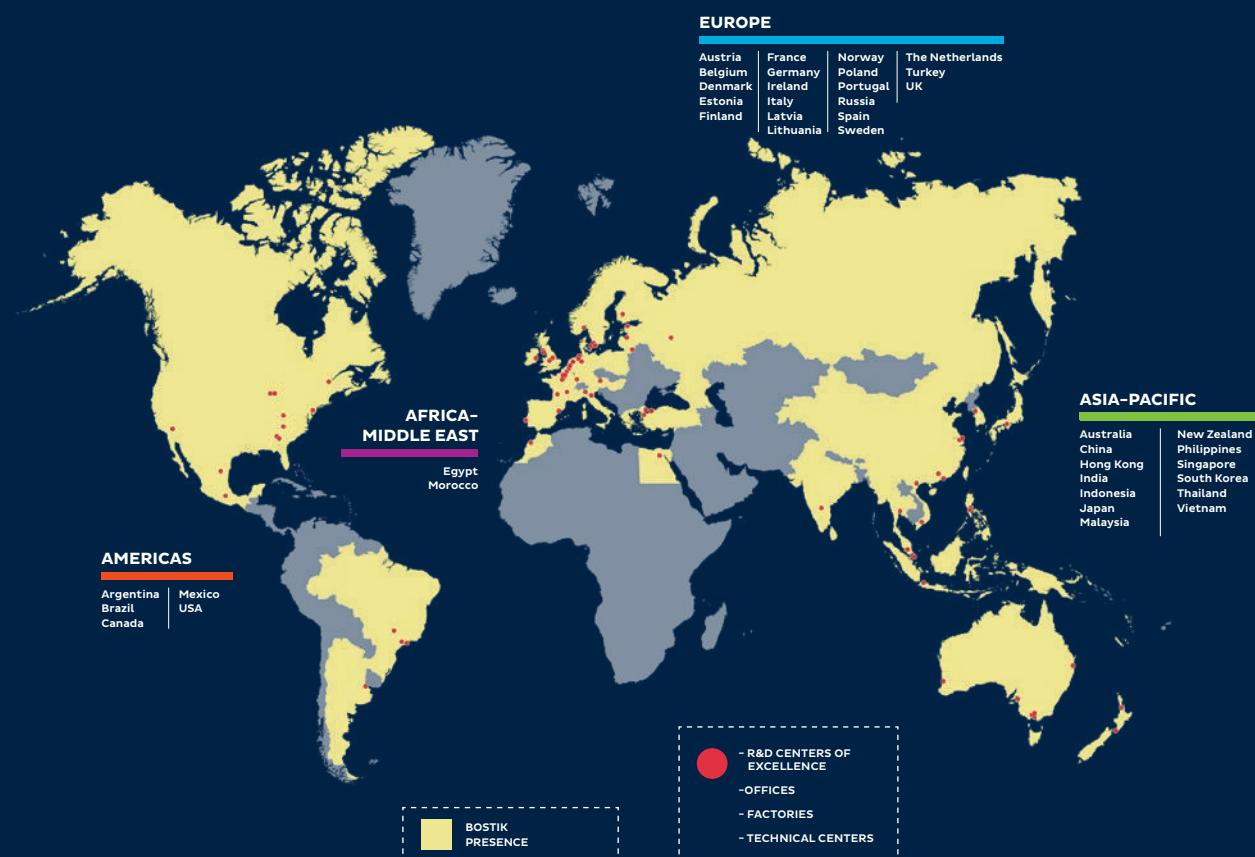
- Encapsulation/LPM
- Conformal Coating

Vehicle Integration

- Structural Bonding onto Chassis



Smart Help:
Please contact your
sales representative,
emea.industrial@bostik.com



**IMPORTANT – PLEASE READ BEFORE USING THIS BROCHURE
TERMS & CONDITIONS**

Bostik offers this Brochure for descriptive and informational use only. The Brochure is not a contract and is not a substitute for expert or professional advice.

The statements, technical information, data, and recommendations contained herein are not exhaustive, are believed to be accurate as of the date hereof, and are not warranted in any way. The Brochure relies upon your knowledge and input, and as such, its results are based solely upon the information you provide and the choices that you make. Since the conditions and methods of use of the products and the information referred to herein are beyond our control, Bostik expressly disclaims any and all liability and damages that may arise from any use of the Brochure, the products, the results therefrom, or reliance on the information contain herein, and you hereby agree to waive any and all claims against Bostik relating in anyway thereto.

The Brochure is one of several tools that may be used to help you find the product best suited for your needs. It is used at your own risk, and by using it, you are knowingly accepting and assuming any and all risks associated with its use, recommendations, output and your selections. You are responsible to test the suitability of any product in advance for any intended use. Bostik does not guarantee the reliability, completeness, use, or function of the Brochure or any recommendations arising therefrom.

The data and information are provided 'AS IS'.

The information provided herein relates only to the specific products designated and may not be applicable when such products are used in combination with other materials or in any process. Bostik encourages you to read and understand the Technical Data Sheet and the Safety Data Sheet for all products, which are located on our corporate website.

NO WARRANTY OF FITNESS FOR ANY PARTICULAR PURPOSE OR WARRANTY OF MERCHANTABILITY, EXPRESSED OR IMPLIED, IS MADE CONCERNING THE PRODUCTS DESCRIBED OR THE INFORMATION PROVIDED HEREIN, AND SUCH WARRANTIES ARE HEREBY DISCLAIMED. Bostik disclaims any liability for direct, incidental, consequential, or special damages to the maximum extent allowed by law. Nothing contained herein constitutes a license to practice under any patent, and it should not be construed as an inducement to infringe any patent. You are advised to take appropriate steps to be sure that any proposed use of the products will not result in patent infringement.

By using this Brochure, you are hereby consenting to the above terms and conditions of use, and you agree to waive certain rights as set forth above.

Bostik SA

420 rue d'Estienne d'Orves

92705 Colombes Cedex

www.bostik.com

an Arkema company

ARKEMA
INNOVATIVE CHEMISTRY